
Port Fairy Jazz Festival

Bullying and Harassment Policy

1. Scope	1
2. Aims	Error! Bookmark not defined.
3. Policy	2
Festival Workers rights and responsibilities	2
Unacceptable workplace conduct	2
Discrimination	3
Bullying	4
Sexual harassment	4
Victimisation	5
Gossip	5
Merit at Port Fairy Jazz Festival	6
Resolving issues at Port Fairy Jazz Festival	6
7. Other relevant Port Fairy Jazz Festival policies	6
8. Review details	6

1. Scope

This policy applies to:

- Contractors, volunteers and patrons to Port Fairy Jazz Festival's premises, to the extent it is relevant to them.

2. Aim

Port Fairy Jazz Festival is committed to providing a safe, flexible and respectful environment for Festival Workers and clients free from all forms of discrimination, bullying and sexual harassment.

All Port Fairy Jazz Festival, Festival Workers are required to treat others with dignity, courtesy and respect.

By effectively implementing our *Workplace discrimination and harassment policy* we will attract and retain talented Festival Workers and create a positive environment for Festival Workers.

3. Definition

Festival Workers refers to Committee members, contractors and volunteers.

4. Policy

Festival Workers rights and responsibilities

All Festival Workers are entitled to:

- recruitment and selection decisions based on merit and not affected by irrelevant personal characteristics
- work free from discrimination, bullying and sexual harassment
- the right to raise issues or to make an enquiry or complaint in a reasonable and respectful manner without being victimised
- reasonable flexibility in working arrangements, especially where needed to accommodate their family responsibilities, disability, religious beliefs or culture.

All Festival Workers must:

- follow the standards of behaviour outlined in this policy
- offer support to people who experience discrimination, bullying or sexual harassment, including providing information about how to make a complaint
- avoid gossip and respect the confidentiality of complaint resolution procedures
- treat everyone with dignity, courtesy and respect.

(a) *Additional responsibilities of Coordinators*

Coordinators must also:

- model appropriate standards of behaviour
- take steps to educate and make Festival Workers aware of their obligations under this policy and the law
- intervene quickly and appropriately when they become aware of inappropriate behaviour
- act fairly to resolve issues and enforce workplace behavioural standards, making sure relevant parties are heard
- help Festival Workers resolve complaints informally
- refer formal complaints about breaches of this policy to the appropriate complaint handling officer for investigation
- ensure Festival Workers who raise an issue or make a complaint are not victimised
- ensure that recruitment decisions are based on merit and that no discriminatory requests for information are made
- seriously consider requests for flexible work arrangements.

Unacceptable workplace conduct

Discrimination, bullying and sexual harassment are unacceptable at Port Fairy Jazz Festival and are unlawful under the following legislation:

- *Sex Discrimination Act 1984 (Cth)*
- *Racial Discrimination Act 1975 (Cth)*
- *Disability Discrimination Act 1992 (Cth)*
- *Age Discrimination Act 2004 (Cth)*
- *Australian Human Rights Commission Act 1986 (Cth).*

Festival Workers found to have engaged in such conduct might be counselled, warned or disciplined. Severe or repeated breaches can lead to formal discipline up to and including dismissal.

Discrimination

Discrimination is treating, or proposing to treat, someone unfavourably because of a personal characteristic protected by the law, such as sex, age, race or disability.

Discrimination can occur:

Directly, when a person or group is treated less favourably than another person or group in a similar situation because of a personal characteristic protected by law (see list below).

*For example, a worker is harassed and humiliated because of their race
or
A worker is refused promotion because they are 'too old'*

Indirectly, when an unreasonable requirement, condition or practice is imposed that has, or is likely to have, the effect of disadvantaging people with a personal characteristic protected by law (see list below).

For example, redundancy is decided based on people who have had a worker's compensation claim rather than on merit.

Protected personal characteristics under Federal discrimination law include:

- a disability, disease or injury, including work-related injury
- parental status or status as a carer, for example, because they are responsible for caring for children or other family members
- race, colour, descent, national origin, or ethnic background
- age, whether young or old, or because of age in general
- sex
- industrial activity, including being a member of an industrial organisation like a trade union or taking part in industrial activity, or deciding not to join a union
- religion
- pregnancy and breastfeeding
- sexual orientation, intersex status or gender identity, including gay, lesbian, bisexual, transsexual, transgender, queer and heterosexual
- marital status, whether married, divorced, unmarried or in a de facto relationship or same sex relationship
- political opinion
- social origin

- medical record
- an association with someone who has, or is assumed to have, one of these characteristics, such as being the parent of a child with a disability.

It is also against the law to treat someone unfavourably because you assume they have a personal characteristic or may have it at some time in the future.

Bullying

If someone is being bullied because of a personal characteristic protected by equal opportunity law, it is a form of discrimination.

Bullying can take many forms, including jokes, teasing, nicknames, emails, pictures, text messages, social isolation or ignoring people, or unfair work practices.

Under Federal law, this behaviour does not have to be repeated to be discrimination – it may be a one-off event.

Behaviours that may constitute bullying include:

- sarcasm and other forms of demeaning language
- threats, abuse or shouting
- coercion
- isolation
- inappropriate blaming
- ganging up
- constant unconstructive criticism
- deliberately withholding information or equipment that a person needs to do their job or access their entitlements
- unreasonable refusal of requests for leave, training or other workplace benefits.

Bullying is unacceptable in Port Fairy Jazz Festival and may also be against occupational health and safety law.

Sexual harassment

Sexual harassment is a specific and serious form of harassment. It is unwelcome sexual behaviour, which could be expected to make a person feel offended, humiliated or intimidated. Sexual harassment can be physical, spoken or written. It can include:

- comments about a person's private life or the way they look
- sexually suggestive behaviour, such as leering or staring
- brushing up against someone, touching, fondling or hugging
- sexually suggestive comments or jokes
- displaying offensive screen savers, photos, calendars or objects
- repeated unwanted requests to go out
- requests for sex
- sexually explicit posts on social networking sites

- insults or taunts of a sexual nature
- intrusive questions or statements about a person's private life
- sending sexually explicit emails or text messages
- inappropriate advances on social networking sites
- accessing sexually explicit internet sites
- behaviour that may also be considered to be an offence under criminal law, such as physical assault, indecent exposure, sexual assault, stalking or obscene communications.

Just because someone does not object to inappropriate behaviour in the workplace at the time, it does not mean that they are consenting to the behaviour.

Sexual harassment is covered in the workplace when it happens at work, at work-related events, between people sharing the same workplace, or between colleagues outside of work.

All Festival Workers have the same rights and responsibilities in relation to sexual harassment.

A single incident is enough to constitute sexual harassment – it doesn't have to be repeated.

All incidents of sexual harassment – no matter how large or small or who is involved – require employers and managers to respond quickly and appropriately.

Port Fairy Jazz Festival recognises that comments and behaviour that do not offend one person can offend another. This policy requires all Festival Workers to respect other people's limits.

Victimisation

Victimisation is subjecting or threatening to subject someone to a detriment because they have asserted their rights under equal opportunity law, made a complaint, helped someone else make a complaint, or refused to do something because it would be discrimination, sexual harassment or victimisation. Victimisation is against the law.

It is also victimisation to threaten someone (such as a witness) who may be involved in investigating an equal opportunity concern or complaint.

Victimisation is a very serious breach of this policy and is likely (depending on the severity and circumstances) to result in formal discipline against the perpetrator.

Port Fairy Jazz Festival has a zero-tolerance approach to victimisation.

Gossip

It is unacceptable for Festival Workers at Port Fairy Jazz Festival to talk with other Festival Workers members, clients or suppliers about any complaint of discrimination or harassment.

Breaching the confidentiality of a formal complaint investigation or inappropriately disclosing personal information obtained in a professional role (for example, as a manager) is a serious breach of this policy and may lead to formal discipline.

Merit at Port Fairy Jazz Festival

All recruitment and job selection decisions at Port Fairy Jazz Festival will be based on merit – the skills and abilities of the candidate as measured against the inherent requirements of the position – regardless of personal characteristics.

It is unacceptable and may be against the law to ask job candidates questions, or to in any other way seek information, about their personal characteristics, unless this can be shown to be directly relevant to a genuine requirement of the position.

Resolving issues at Port Fairy Jazz Festival

Port Fairy Jazz Festival strongly encourages any Festival Workers member who believes they have been discriminated against, bullied, sexually harassed or victimised to take appropriate action by reporting the behaviour to **OHS and Emergency Officer** as per the **Incident and Injury Reporting Policy** and related procedure.

Festival Workers who do not feel safe or confident to take such action may seek assistance directly from the President for advice and support or action their behalf.

7. Other relevant Port Fairy Jazz Festival policies

Festival Workers, especially managers and supervisors, are encouraged to read this policy in conjunction with other relevant Port Fairy Jazz Festival policies, including [Guidance note (delete this later): list relevant policies.]

- Occupational Health and Safety Policy
- Misconduct Policy

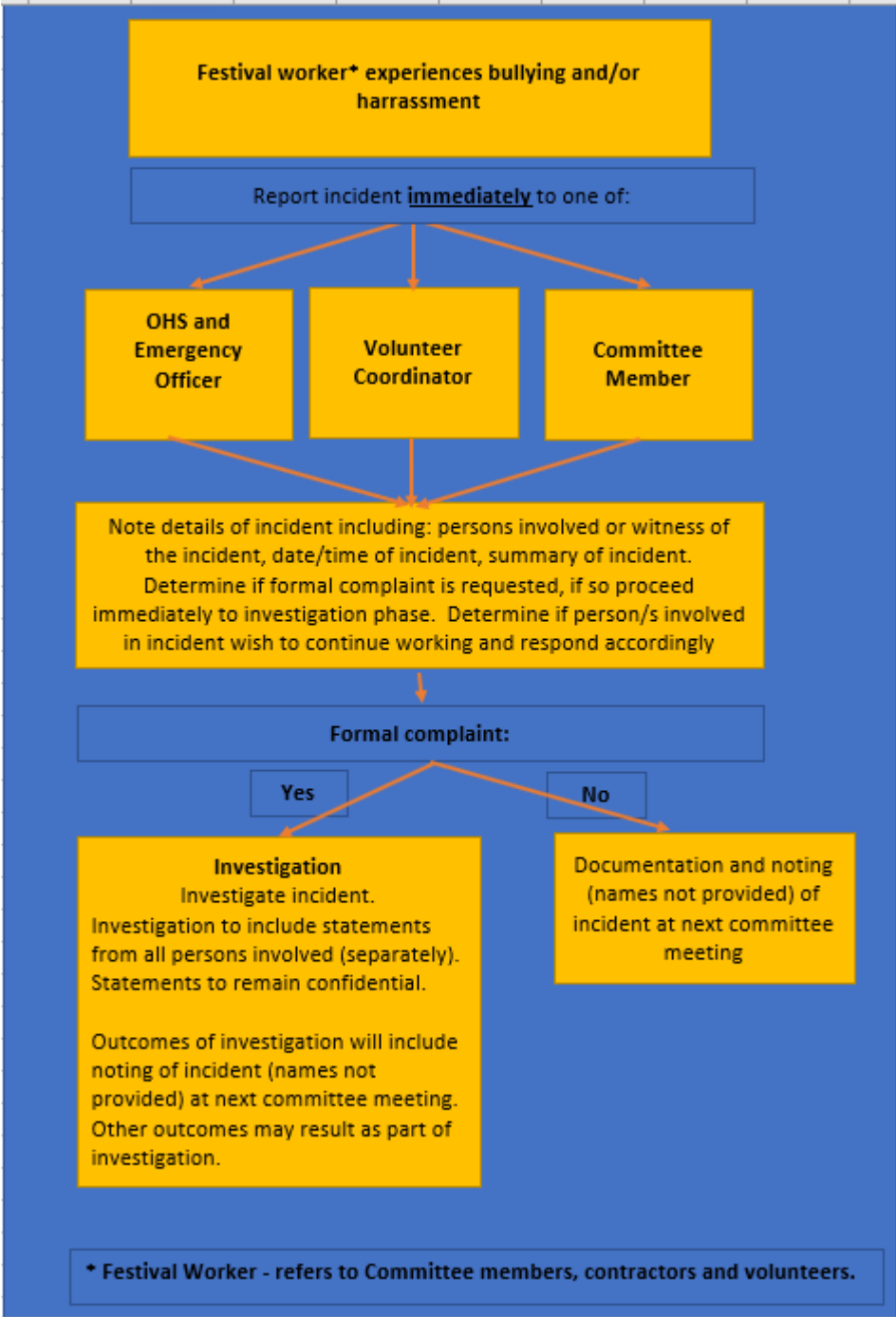
8. Review details

This policy was adopted by Port Fairy Jazz Festival on 24th August 2017

This policy was last updated on 24th August 2017

Bullying and Harassment Procedure

NOTE: This procedure is to be read in conjunction with the Bullying and Harassment Policy



Procedure adopted 11/1/2018 and added to Policy