

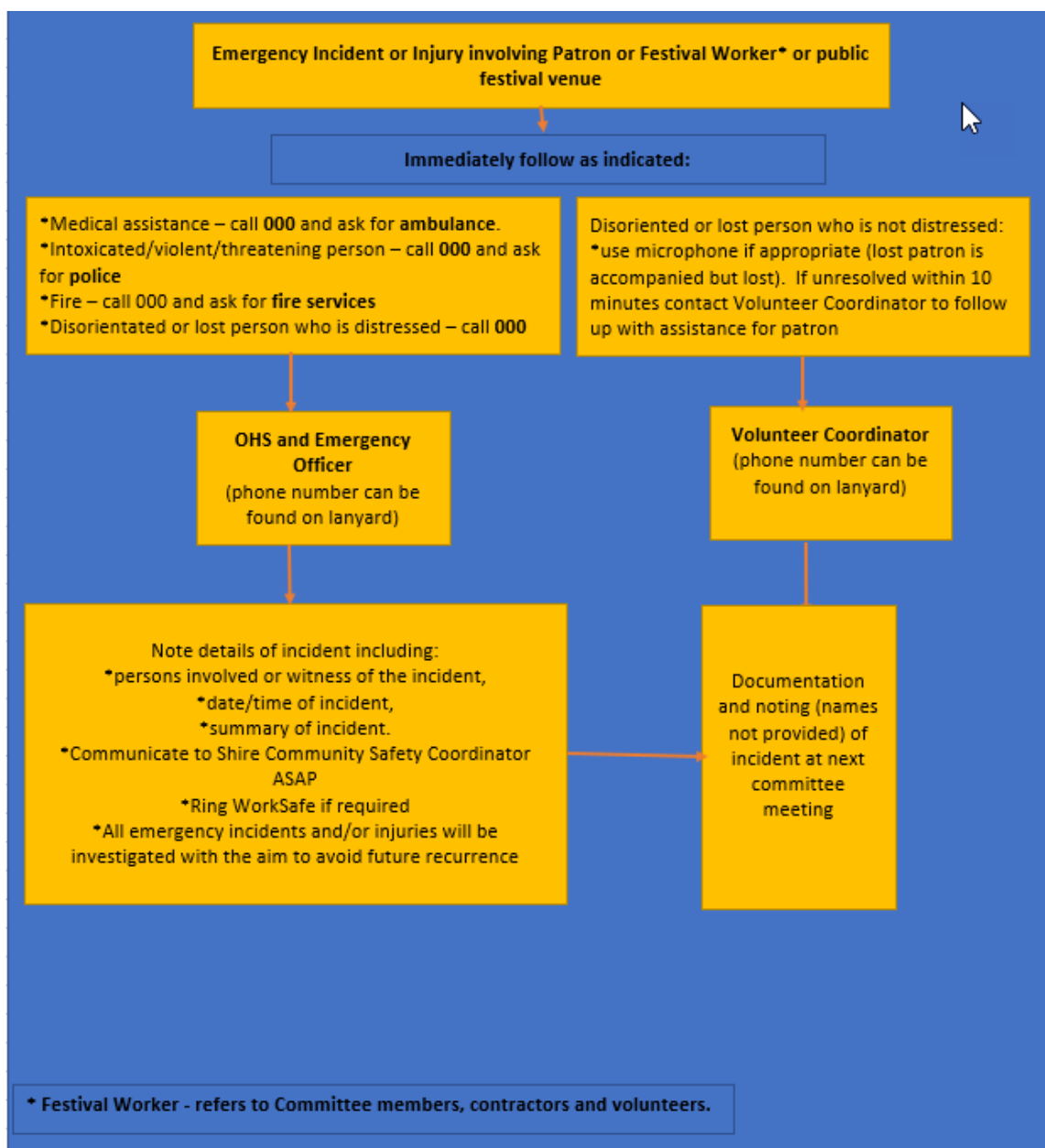
## Combined Policy Summary

### Work Health and Safety Policy

The aim of this policy is to show the Port Fairy Jazz Festival's commitment to ensuring, as far as is reasonably practicable, the health, safety and welfare of the working environment for its festival workers, volunteers, contractors and patrons to its premises.

### Emergency Incident and Injury

The aim of This policy is to ensure that all employees (including volunteers) understand the processes to be taken in the event of a dangerous occurrence or accident.

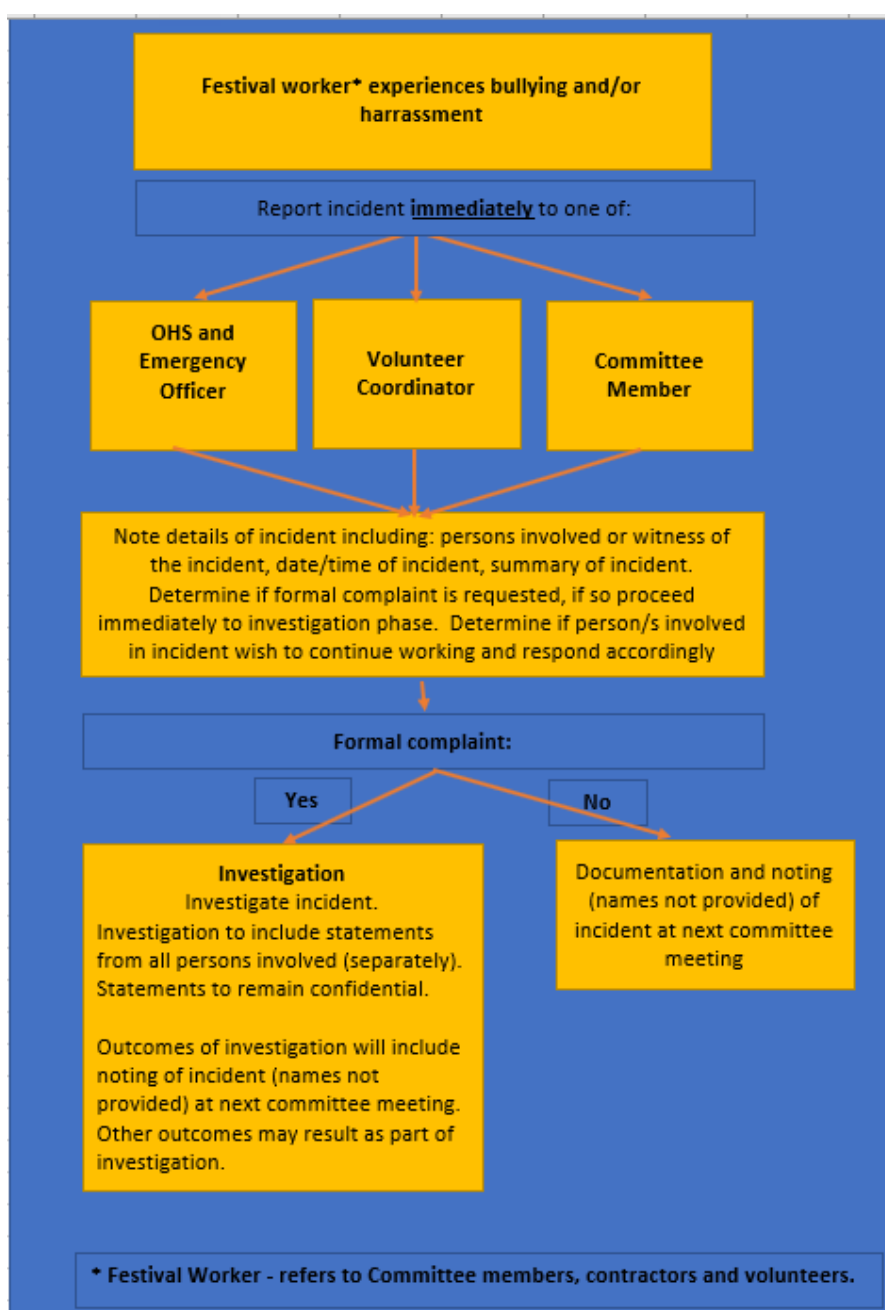


## Bullying and Harassment

The aim of this policy is to show the Port Fairy Jazz Festival's commitment to providing a safe, flexible and respectful environment for staff and clients free from all forms of discrimination, bullying and sexual harassment.

All Port Fairy Jazz Festival staff are required to treat others with dignity, courtesy and respect.

By effectively implementing our Workplace discrimination and harassment policy we will attract and retain talented staff and create a positive environment for staff.



## Misconduct

The purpose of this policy is to ensure that people are aware of behaviour that could amount to misconduct and that all relevant parties are aware of Port Fairy Jazz Festival's policy for dealing with misconduct.

